



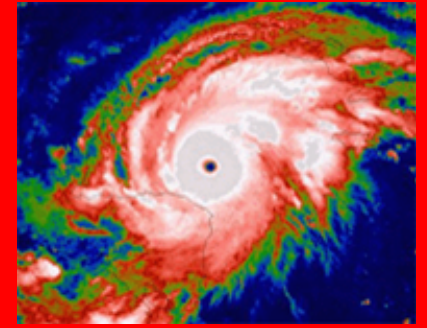
The City of Texas City is pleased to offer more informative brochures for you.

Visit our website at: [/www.texas-city-tx.org](http://www.texas-city-tx.org) for more information on topics such as:

- Hurricane preparedness
- Tornado safety
- Flooding
- Emergency Evacuation Plans for your Family

If you have additional questions, contact your local Emergency Management Office at (409) 643-5707.

This information has been provided to you by the City of Texas City by the Texas Division of Emergency Management, P.O. Box 4087, Austin, Texas 78773-0001



Galveston County Tornado Safety Tips

Presented by the
City of Texas City
Office of Emergency Management

TORNADOES



Tornadoes strike with little or no warning. Each family should develop a tornado

plan and designate a safety shelter. Practice the plan you and your family developed

How to Prepare for Tornadoes

Know the meaning of terms used to describe tornado threats:

- **Tornado Watch** - tornadoes are possible.
- **Tornado Warning** - take shelter, tornado sighted.
- **Severe Thunderstorm Watch** - severe thunderstorms are possible
- **Severe Thunderstorm Warning** - severe thunderstorms are occurring.

1. Purchase a NOAA Weather Radio, a battery-powered commercial radio and extra batteries for each.
2. Have emergency supplies on hand.
3. Inventory your possessions. Keep important papers in a safe deposit box.

What To Do During a Tornado

When a tornado is sighted, go to your shelter immediately, stay away from windows, door, outside walls:

- In a house or small building, go to the basement or an interior room on the lowest level.
- In a school, nursing home, hospital, factory or shopping center; go to pre-designated shelter area or interior halls on the lowest level.
- In a high-rise building, go to a small interior room or hallway on lowest floor possible.
- Get under a sturdy piece of furniture, a table or desk.

- Use your arms to protect head and neck. In a mobile home, trailer, or vehicle, get out immediately and go to a substantial structure. A ditch, ravine, or culvert could be used if no structure is available.
- Do not attempt to out-drive a tornado.

Tornado shelters should be stocked with the following supplies:

- flashlight and extra batteries
- battery operated radio with weather band
- first-aid kit
- emergency food and water and
- manual can opener
- essential medications
- cash and credit cards
- sturdy shoes